

Institut Universitaire de Langue et de Culture
Françaises de l'Institut Catholique de Toulouse

TRAINING BOOKLET

Intensive courses

2025-2026



ict
INSTITUT
UNIVERSITAIRE
DE LANGUE ET
DE CULTURE
FRANÇAISES

WELCOME TO THE IULCF

Dear learners,

It is with great pleasure that we welcome you to the IULCF. You have chosen to come to France to learn and improve your French, and we are honoured to accompany you on this wonderful linguistic and cultural adventure.

Our institute offers you a dynamic learning environment, where our passionate teachers will guide you with kindness and expertise. In addition to the courses, your stay will be a unique opportunity to discover the richness of French culture, interact with other students from all over the world and enjoy an unforgettable experience.

Rest assured that our entire team is at your disposal to facilitate your integration and help you make the most of this immersion. We hope that your time at the IULCF will be a source of personal and academic enrichment, and that it will mark the beginning of a wonderful Francophone adventure.

Welcome and have a wonderful year at the IULCF!

Bozena Billerey,
Head of IULCF



★ ★ ★ formations
★ ★ ★ enseignants
★ ★ ★ accueil
★ ★ ★ locaux
★ ★ ★ gestion

20 mai 2021 - 19 mai 2025



COURSES



THE ADVANTAGES OF INTENSIVE COURSES

- Immersion in a rich and authentic cultural environment.
- Experienced teachers of French as a foreign language, using a variety of materials to maximise motivation.
- Participation in a variety of cultural activities in Toulouse, either free of charge or at a moderate price.
- The opportunity to study in a university environment, with access to the university library and canteen.

A guarantee of recognised quality with the FLE Quality Label, renewed in 2021.

COURSE DESCRIPTION

- Written comprehension and expression activities, oral comprehension and expression activities (with a variety of aids);
- Theory and practical exercises in French grammar;
- Vocabulary development activities.

In addition to the linguistic progression, many socio-cultural aspects are covered.

- The activities are very varied: simulations, role-playing, debates, presentations, workshops, study of literary works, etc.
- In addition to class projects, the IULCF offers students 'intergroup' projects throughout the year (treasure hunts, cultural outings, international evenings, culinary workshops, etc.).



My training course
PLANNING



INTENSIVE COURSES IN FRENCH AS A FOREIGN LANGUAGE

COURSE TIMETABLES

September to June:

Monday	Tuesday	Wednesday	Thursday	Friday
8h30 - 12h15	8h30 - 12h15	8h30 - 12h15	8h30 - 12h15	9h - 12h

July & August :

Monday	Tuesday	Wednesday	Thursday	Friday
8h30 - 12h30	8h30 - 12h30	8h30 - 12h30	8h30 - 12h30	8h30 - 12h30

END-OF-SESSION DOCUMENTS

- A school leaving certificate
- A pedagogical report
- Transcript of marks (on request)

2025-2026 CALENDAR

Septembrer 2025			October 2025			November 2025			Décember 2025			January 2026			February 2026		
1	L		1	M		1	S		1	L		1	J		1	D	
2	M		2	J		2	D		2	M		2	V		2	L	
3	M		3	V		3	L		3	M		3	S		3	M	
4	J		4	S		4	M		4	J		4	D		4	M	
5	V		5	D		5	M		5	V		5	L		5	J	
6	S		6	L		6	J		6	S		6	M		6	V	
7	D		7	M		7	V		7	D		7	M		7	S	
8	L		8	M		8	S		8	L		8	J		8	D	
9	M		9	J		9	D		9	M		9	V		9	L	
10	M		10	V		10	L		10	M		10	S		10	M	
11	J		11	S		11	M		11	J		11	D		11	M	
12	V		12	D		12	M		12	V		12	L		12	J	
13	S		13	L		13	J		13	S		13	M		13	V	
14	D		14	M		14	V		14	D		14	M		14	S	
15	L		15	M		15	S		15	L		15	J		15	D	
16	M		16	J		16	D		16	M		16	V		16	L	
17	M		17	V		17	L		17	M		17	S		17	M	
18	J		18	S		18	M		18	J		18	D		18	M	
19	V		19	D		19	M		19	V		19	L		19	J	
20	S		20	L		20	J		20	S		20	M		20	V	
21	D		21	M		21	V		21	D		21	M		21	S	
22	L		22	M		22	S		22	L		22	J		22	D	
23	M		23	J		23	D		23	M		23	V		23	L	
24	M		24	V		24	L		24	M		24	S		24	M	
25	J		25	S		25	M		25	J		25	D		25	M	
26	V		26	D		26	M		26	V		26	L		26	J	
27	S		27	L		27	J		27	S		27	M		27	V	
28	D		28	M		28	V		28	D		28	M		28	S	
29	L		29	M		29	S		29	L		29	J				
30	M		30	J		30	D		30	M		30	V				
			31	V					31	M		31	S				

Start of session

no courses

SESSIONS DATES

02/09/2025 – 26/09/2025

29/09/2025 – 24/10/2025

03/11/2025 – 28/11/2025

01/12/2025 – 19/12/2025

05/01/2026 – 30/01/2026

02/02/2026 – 27/02/2026

2025-2026 CALENDAR

March 2026			April 2026			May 2026			June 2026			July 2026			August 2026		
1	D		1	M		1	V		1	L		1	M		1	S	
2	L		2	J		2	S		2	M		2	J		2	D	
3	M		3	V		3	D		3	M		3	V		3	L	
4	M		4	S		4	L		4	J		4	S		4	M	
5	J		5	D		5	M		5	V		5	D		5	M	
6	V		6	L		6	M		6	S		6	L		6	J	
7	S		7	M		7	J		7	D		7	M		7	V	
8	D		8	M		8	V		8	L		8	M		8	S	
9	L		9	J		9	S		9	M		9	J		9	D	
10	M		10	V		10	D		10	M		10	V		10	L	
11	M		11	S		11	L		11	J		11	S		11	M	
12	J		12	D		12	M		12	V		12	D		12	M	
13	V		13	L		13	M		13	S		13	L		13	J	
14	S		14	M		14	J		14	D		14	M		14	V	
15	D		15	M		15	V		15	L		15	M		15	S	
16	L		16	J		16	S		16	M		16	J		16	D	
17	M		17	V		17	D		17	M		17	V		17	L	
18	M		18	S		18	L		18	J		18	S		18	M	
19	J		19	D		19	M		19	V		19	D		19	M	
20	V		20	L		20	M		20	S		20	L		20	J	
21	S		21	M		21	J		21	D		21	M		21	V	
22	D		22	M		22	V		22	L		22	M		22	S	
23	L		23	J		23	S		23	M		23	J		23	D	
24	M		24	V		24	D		24	M		24	V		24	L	
25	M		25	S		25	L		25	J		25	S		25	M	
26	J		26	D		26	M		26	V		26	D		26	M	
27	V		27	L		27	M		27	S		27	L		27	J	
28	S		28	M		28	J		28	D		28	M		28	V	
29	D		29	M		29	V		29	L		29	M		29	S	
30	L		30	J		30	S		30	M		30	J		30	D	
31	M					31	D					31	V		31	L	

classes : 8.30 a.m. - 12.30 p.m.

Start of session

no courses

SESSIONS DATES

02/03/2026 – 27/03/2026

01/04/2026 – 29/04/2026

30/04/2026 – 29/05/2026

01/06/2026 – 26/06/2026

01/07/2026 – 30/07/2026

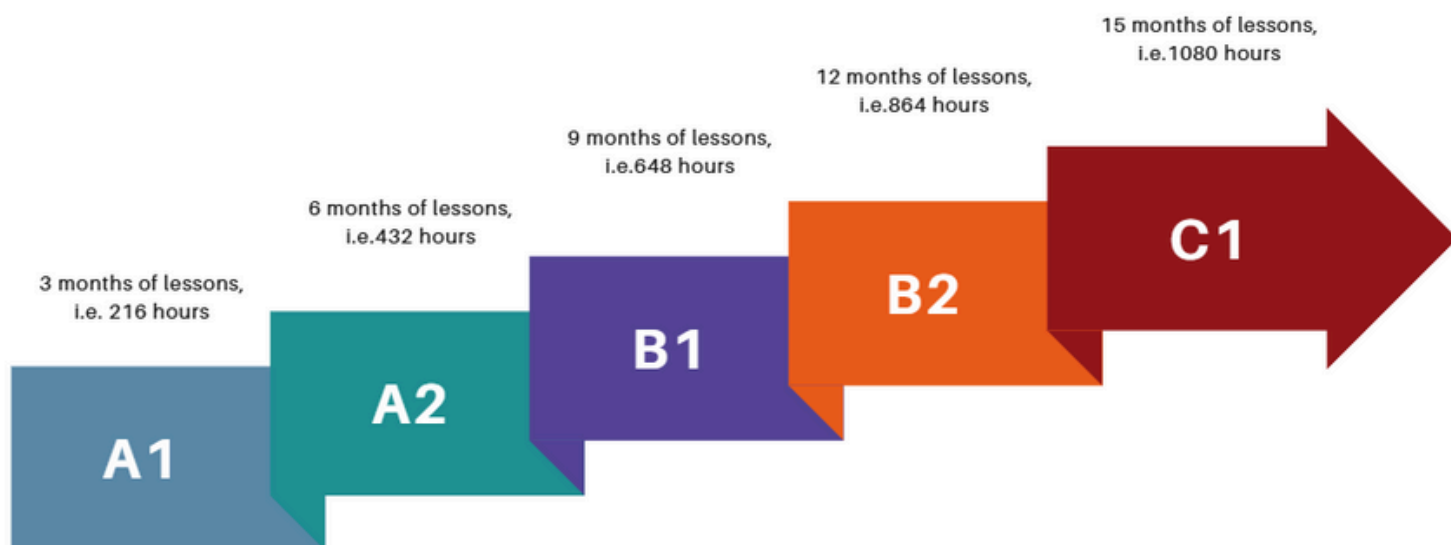
03/08/2026 – 28/08/2026

My training

DESCRIPTION OF LEVELS

INTENSIVE FRENCH COURSES

72 hours per month



<p>Expertise</p> <p>What I'm going to learn to do...</p>	<p>Language tools</p> <p>What I'll need to do...</p>
<ul style="list-style-type: none"> - Spelling - Counting - Greeting, saying goodbye, thanking, apologising - Introduce yourself, identify a person, introduce someone - Getting to know someone, asking for personal information (surname, first name, age, address, telephone number, etc.) - Write a simple message - Name and locate an object - Describe a home - Go shopping, ask about prices and colours, describe an object - Introduce your family, talk about those around you - Express tastes, preferences and interests - Give a physical description of a person - Talk about daily routines and timetables - Ask about other people's activities - Ask for and give the time - Give a date, situate in time - Ask for and give an itinerary - Understand and present tourist information - Locate a place on a map - Giving advice and instructions - Ask for and give permission - Express an order/obligation - Make, accept or refuse a proposal - Make a polite request - Talking about your intentions and plans for the weekend - Inform about an activity in progress - Report a recent event 	<ul style="list-style-type: none"> - The letters and sounds of French - Present tense of regular and everyday verbs - Subject and tonic personal pronouns - The gender of nouns and adjectives - Prepositions before country names - Singular and plural nouns - The definite and indefinite article - Forms: 'il y a' / 'c'est/ce sont' / 'voici !' / 'voilà !' - Prepositions of place: 'à', 'au', 'de', 'chez', 'avec', 'dans'. - Interrogations: 'who', 'where', 'what', 'why'. - Questioning with 'What?' and 'Is that?' - interrogation with 'how' and 'how much' - Demonstrative and possessive adjectives - The present polite conditional 'je voudrais' and 'j'aimerais' - The verbs 'aimer', 'adorer' and 'détester' - The negation 'ne....pas / jamais' (never) - The verbs 'faire de', 'jouer à', 'jouer de' - Qualifying adjectives - Pronominal verbs - The imperative (some verbs) - The pronoun 'y' (place) - Cardinal points - Prepositions of time: 'at 8.30am, in 2016'. - The verbs 'must', 'can' and 'want'. - Il faut / il ne faut pas + Infinitive - The future tense: 'I'm going to + infinitive'. - Present progressive: 'Je suis en train de + infinitive' - The recent past: 'I have just + infinitive'. - The passé composé

Lexical themes linked to knowledge and skills	Socio-cultural aspects
<p>Numbers</p> <ul style="list-style-type: none"> - Nationalities - Occupations - French-speaking countries - Housing, rooms, furniture and objects in the home - Colours / Pastels and Pays de Cocagne - Clothes and accessories - Shopping - Family and social relationships - Activities, sports and leisure in Midi Pyrénées - Household chores - Physical description - The human body - My portrait / Portrait of a person - Daily activities / My day / My timetable - Dates, days, months, seasons - Times of day / The Toulouse quarter-hour - The city of Toulouse and the Midi Pyrénées region - Means of transport - Wellbeing and health - Weekend and holiday plans - Studies and professions - The career of a Toulouse artist 	<ul style="list-style-type: none"> -Greetings and forms of address - First and last names - Apologies - Formulas for friendly letters / emails

<p>Expertise</p> <p>What I'm going to learn to do...</p>	<p>Language tools</p> <p>What I'll need to do...</p>
<ul style="list-style-type: none"> -Telling about past events, a memory, an anecdote, a series of events, a news item, a past experience, etc. - Situate events in time - Write a short biography - Recount past states and habits - Compare things and people - Present a country, a town and its inhabitants - Present advantages and disadvantages - Talk about eating habits - Make a shopping list - Understand and write a recipe - Describe objects and talk about their function - Make forecasts, talk about the future, talk about plans - Make hypotheses - Prepare a holiday programme - Write a postcard - Find out about someone - Make an appointment - Accept and refuse an invitation - Find out about places, things and people - Expressing agreement/disagreement - Evaluating and assessing - Asking for and offering help - Asking for and giving advice - Express the cause, explain choices, give a reason - Expressing wishes and feelings - Express objectives - Describing how to do things 	<p>The compound past tense with 'to have' and 'to be'</p> <ul style="list-style-type: none"> - Agreement of the past participle with être - The imperfect tense (formation and use) - Simple comparison (nouns, adjectives and verbs) - Partial articles - The pronoun 'en' (quantity) - COD and COI pronouns / some indirect verbs - The three values of 'on': we, the people, someone - The future simple tense - The hypothesis about the present and future - The simple relative pronouns 'qui', 'que', 'où'. - Adjectives - Negation: 'ne...pas, ne...plus, ne...jamais, ne...rien, ne...personne'. - Alternating the passé composé and the imperfect tense - Chronological articulators: 'first, then, then, after, finally'. - Adverbs of time: 'now, soon, tomorrow'. - The present conditional - Prepositional verbs: 'to stop, to think about - Indefinite adjectives: 'all', 'tout', 'tous', 'toutes'. - Expressions of cause and consequence: 'because of, thanks to, as, because, because, therefore, then, that's why'. - The present subjunctive (awareness) - Expressing obligations and wishes - Expressing a goal: 'for / in order to + infinitive'. - Adverbs in 'ment - The gerund (simultaneity)

LEVEL A1

-3 months at the IULCF (216 hours)

Lexical themes linked to knowledge and skills	Socio-cultural aspects
<p>Traditional festivals</p> <ul style="list-style-type: none">- Childhood memories- Life today and life in the past- Where we live: town and country- Fashions- Food, cooking and local gastronomy- Everyday objects- Technological objects and inventions- The weather- The world of tomorrow- Holidays and travel- The education system, studies, training- Professional projects- The world of work- People and places- Habits, preferences- The media, news and current affairs- Health, well-being, sport- The environment, climate, ecology- Superstitions and beliefs- The world of associations / Toulouse associations- Clichés and stereotypes	<p>Good manners and everyday etiquette</p> <ul style="list-style-type: none">-Expressions and rituals of telephone conversation- Invitation formulas- Thank you formulas- Formulas for friendly letters / emails

<p>Expertise</p> <p>What I'm going to learn to do...</p>	<p>Language tools</p> <p>What I'll need to do...</p>
<ul style="list-style-type: none"> -Understand and recount past events, a memory, an anecdote, a sequence of events, a past experience. - Ask for and give information about daily routines, news about someone - Understand press articles - Understand news items - Understand and talk about familiar subjects - Understand/give facts about current affairs and events - Talking about tastes and plans - Ask for and give advice, explanations and details - Express an obligation - Compare objects, behaviour, eras, etc. - Make suggestions and react to proposals - Express wishes, hopes and intentions - Express a wish and offer services - Express cause and consequence - Express opinions and points of view, explain choices and justify them -cope with an unexpected situation when travelling - make a complaint 	<p>Alternating the imperfect with the compound past</p> <ul style="list-style-type: none"> - The past participle and its agreement with 'avoir - The plus-que parfait (action prior to another action) - The future simple tense - The future tense - The present conditional (expressing feelings, wishes, obligations and intentions) - Present subjunctive (possibility, obligation) - The comparative (on nouns, adjectives, verbs and adverbs) - Irregular comparatives and progressive comparison - The superlative - Simple relative pronouns (revision + ' dont ') and compound pronouns - Possessive and demonstrative pronouns - Emphasis - Purpose, cause and consequence

LEVEL B1

-3 months at the IULCF (216 hours)

Lexical themes linked to knowledge and skills	Socio-cultural aspects
<p>The education system, studies, training</p> <ul style="list-style-type: none">- Work, the professional world- Health and social security- Leisure and extreme sports- Arts and culture- Ecology, the environment and local initiatives- The media and current affairs- New technologies and communication tools- Consumerism- Holidays, travel, alternative tourism- Social relations, the family- Feelings and emotions- Memories- Customs and cultural traditions- Information technology, technical progress- People: physical description, character, personality	<p>Formulas for friendly letters / emails</p> <ul style="list-style-type: none">-Formulas for formal, administrative letters-Speaking: beginning and ending a presentation

<p>Expertise</p> <p>What I'm going to learn to do...</p>	<p>Language tools</p> <p>What I'll need to do...</p>
<p>Tell detailed events in the past tense</p> <ul style="list-style-type: none"> - Present a topic or project - Express and defend an opinion - Oppose a point of view - Reformulate / paraphrase to explain - Summarise a text or a discussion - Identify a point of view and a line of reasoning - Identify the speaker's tone / humour - Synthesise information and positions from different sources - Present a problem and propose solutions - Formulate hypotheses - Present the advantages and disadvantages of a given situation - Conducting an interview - Introduce an argument - Develop a logical and coherent argument - Highlighting the main and secondary points of an argument - Concluding an argument <p>Expressing possibility and probability</p> <ul style="list-style-type: none"> - Expressing doubt - Write routine administrative and professional letters - Taking notes - Evaluating and appreciating (cinema, literature, graphic arts, etc.) - Express satisfaction and dissatisfaction - Complain by phone and in writing - Expressing regret 	<p>The past tense in the story (present, compound past, imperfect)</p> <ul style="list-style-type: none"> - The past participle and its agreement (special cases) - The more than perfect tense - The past infinitive - The future tense - The condition 'à condition que, pourvu que, au cas où' (on condition that, provided that, in case) - The conditional tense (present and past for advice, regret, reproach, etc.) - Tense concordance in indirect speech in the past tense - The subjunctive (after verbs, impersonal phrases and conjunctive expressions for feelings, doubt, wish, obligation, will, judgement, opposition, concession, etc.) - The gerund - The present participle and the verbal adjective - Hypotheses - Double pronominalization - Compound relative pronouns - Highlighting 'what, what, what of ... it is' (ce qui, ce que, ce dont ... c'est) - Opposition 'en revanche, sans que, cependant,...' (on the other hand, without that, however,...) - The aim 'in view of, in order to, history of, ...'. -The cause 'by reason of, on the pretext of, because of, as a result of, as a consequence of, for, for want of, for want of, by reason of, for fear of, for fear of'. - The consequence 'en conséquence, de ce fait, c'est pour cela, de façon/sorte que, si bien que, tant que, tellement, ainsi'. - Concessions 'nonetheless, however, only, all the same, yet, in defiance of, although, even though'. - Negation / restriction - Articulators 'en outre, de plus' ('in addition, moreover') - Common abbreviations

LEVEL B2

-3 months at the IULCF (216 hours)

Lexical themes linked to knowledge and skills	Socio-cultural aspects
<p>History</p> <ul style="list-style-type: none">- Customs, cultural traditions and cultural implicits- Culture (different art forms)- Fashion- Law and justice- Health- The environment, climate and ecology- The media, access to information and current affairs- Social trends and issues <p>Information and communication technologies</p> <ul style="list-style-type: none">- Scientific innovations- Religions and secularism- The world of work and working life- Discrimination / Solidarity- Equality/parity- Politics, the three powers- Citizenship and acquiring French nationality- Immigration- The French-speaking world- Globalisation- Traditional and fair trade	<p>Formal and administrative letters</p> <ul style="list-style-type: none">- Speaking: beginning and ending a presentation- Rituals for a formal discussion: speaking turns, phatic elements, intonation, etc.- Formulas for written business communication- Language registers and slang- The different types of academic writing

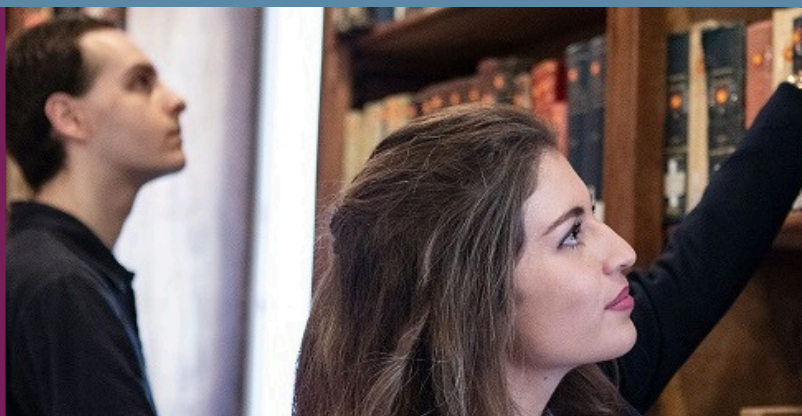
<p>Expertise</p> <p>What I'm going to learn to do...</p>	<p>Language tools</p> <p>What I'll need to do...</p>
<p>Understand a wide range of long, demanding texts and grasp implicit meanings and fine nuances.</p> <ul style="list-style-type: none"> -Summarise a discussion or a long text on a specific topic, highlighting relevant positions and arguments. -Synthesise information and arguments from a variety of sources -Develop and defend a structured, coherent argument -Demonstrate control of the tools of organisation, articulation and cohesion of discourse -Use language flexibly and effectively in social situations 	<p>Anteriority, simultaneity, posteriority (concordance of tenses, prepositions and expressions)</p> <ul style="list-style-type: none"> -The simple past -The past subjunctive: action prior to the present moment -Cause 'whereas, all the more so because, especially because'. -Consequence 'to such an extent that, to the extent that'. -Purpose 'verb + to the effect that + subj, for fear that + subj'. -Condition / hypothesis (sentences with 'if' and conjunctions) -Opposition / concession -Degrees of appreciation (attenuation and reinforcement formulas) -Degrees of intensity: superlatives, adverbs, prefixes and suffixes -Synonyms: pejorative and ameliorative nuances -Figures of speech -Language registers: grammatical and syntactical variants

LEVEL C1

-3 months at the IULCF (216 hours)

Lexical themes linked to knowledge and skills	Socio-cultural aspects
<p>History</p> <ul style="list-style-type: none">- Customs, cultural traditions and cultural implicits- Culture (different art forms)- Fashion- Law and justice- Health- The environment, climate and ecology- The media, access to information and current affairs- Social trends and issues <p>- Information and communication technologies</p> <ul style="list-style-type: none">- Scientific innovations- Religions and secularism- The world of work and working life- Discrimination / Solidarity- Equality/parity- Politics, the three powers- Citizenship and acquiring French nationality- Immigration- The French-speaking world- Globalisation- Traditional and fair trade	<p>Language registers</p> <ul style="list-style-type: none">- The rituals of debate and argument- Implicit meaning and connotations- Idiomatic expressions- Humour and 'second degree- The different types of academic writing

ASSESSMENT OF ACHIEVEMENTS



Your language level and your assessments during the month:

- A placement test is carried out on the first day of the session.
- A formative assessment is carried out by the teacher throughout the session.
- A final test is offered at the end of each session. Your teacher will give you the date. Attendance is compulsory.

TCF French language tests :

You can take this test at our Institute. Please register with the secretariat. Office C207

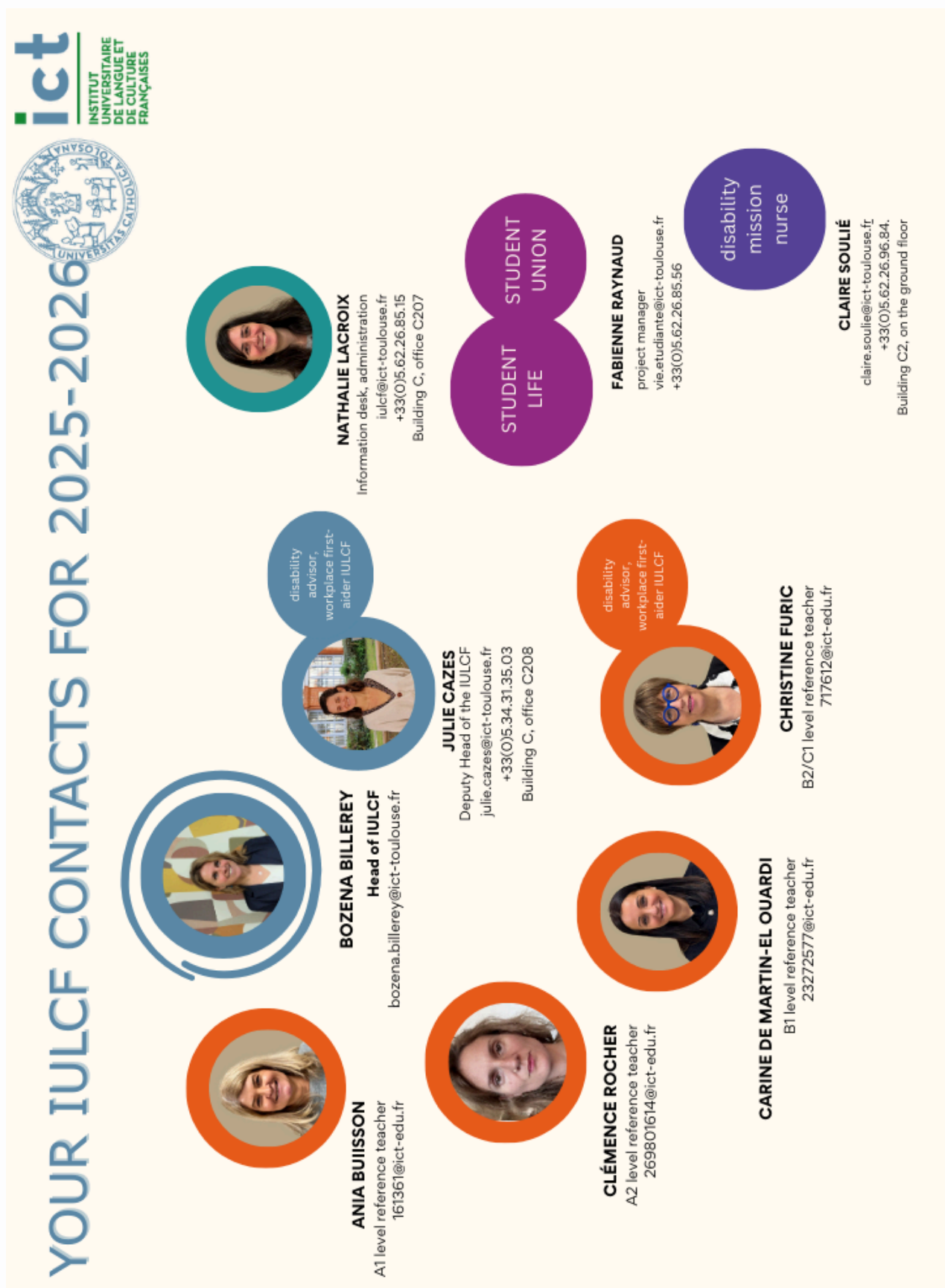
TCF
INTÉGRATION,
RÉSIDENT
& NATIONALITÉ

	Dates de l'examen	Dates limites d'inscription	TARIFS
TCF IRN	1er octobre 2025	4 septembre 2025	160 €
TCF IRN	12 novembre 2025	14 octobre 2025	160 €
TCF IRN	10 décembre 2025	13 novembre 2025	160 €

Diplôme d'Etudes en Langue Française DELF & Diplôme Approfondi de la Langue Française DALF :

You can take this national diploma in Toulouse. For more information, contact your course coordinator.

ORGANISATIONAL CHART



THE IULCF TEAM



ADMINISTRATIVE TEAM



HEAD OF IULCF

Bozena Billerey

✉ bozena.billerey@ict-toulouse.fr

Appointment booking by e-mail



DEPUTY HEAD OF IULCF

Julie Cazes

✉ julie.cazes@ict-toulouse.fr
Appointment booking by e-mail

Administration and Information Desk

Nathalie Lacroix



✉ iulcf@ict-toulouse.fr
☎ 05 62 26 85 42

Office C207 - Building C, 2nd floor
Monday to Friday: 8:00 a.m. to 1:00 p.m. / 2:00 p.m. to 5:00 p.m.
Wednesday: 8:00 a.m. to 1:00 p.m.

ÉQUIPE PÉDAGOGIQUE



A1 LEVEL ADVISOR

Ania Buisson

- Professor

✉ 161361@ict-edu.fr



A2 LEVEL ADVISOR

Clémence Rocher

- Professor

✉ 269801614@ict-edu.fr



B1 LEVEL ADVISOR

Carine De Martin-El Ouardi

- Professor

✉ 123272577@ict-edu.fr



B2/C1 LEVEL ADVISOR

Christine Furic

- Professor

✉ christine.furic@ict-toulouse.fr

DISABILITY LIAISON OFFICER

Our Disability Liaison Officers work with Mission Handicap to help you make the most of your training. The ICT is committed to welcoming learners with disabilities under the best possible conditions. If you need special accommodation, please contact :

Julie CAZES julie.cazes@ict-toulouse.fr


Christine FURIC christine.furic@ict-toulouse.fr

ICT's nurse : Claire Soulié claire.soulie@ict-toulouse.fr

COMPLAINTS AND/OR DIFFICULTIES ENCOUNTERED


If you have any queries, complaints or problems before, during or after your course, you can contact the management team at any time.

A complaints form is available from the secretariat (C207)



Fiche de réclamation

Complaint form



Informations sur l'étudiant / Student information

Nom / Last name: Prénom / First name:

Nationalité / Nationality: Tél:

Adresse postale / Address:

E-Mail:@.....

Date:

Information concernant votre formation / Information about your registration

☐ Cours intensifs / Si oui, quel niveau ? Which level ?

☐ Cours extensifs / Si oui, quel niveau ? Which level ?

☐ Atelier de phonétique / atelier de renforcement

☐ Autre / Other :

Session(s) de cours / dates of the session :

Information concernant votre logement / Information about your accomodation

☐ Résidhotel

☐ studently

☐ Hébergement en famille d'accueil, laquelle ? Host family, which one ?

Description du problème rencontré / Description of the problem

.....

.....

.....

.....

Fiche reçue le par :

Institut Catholique de Toulouse
 31 rue de la fonderie - BP 7012 - 31 068 TOULOUSE CEDEX
 Tel. : 05.61.36.81.30 Fax : 05.61.36.81.37
 www.ict-toulouse.fr email : iulcf@ict-toulouse.fr

You can return this complaint form to the management office, to Mrs. Billerey, bozena.billerey@ict-toulouse.fr

DIGITAL TOOLS

Once you have fully registered, you will receive an email from tice@ict-toulouse.fr with your ID and password as follows:

username: 010206@ict-edu.fr

password to reset: (example) ^Y&>h%u8

These identifiers allow you to access your digital work environment.

This space is made up of the following tools :

- Microsoft Office 365 Online (Outlook, Word, etc.) <https://portal.office.com/>
- Moodle distance learning platform <https://moodle.ict-toulouse.fr/>
- Scolaweb school management extranet (enrolment, timetable, marks and absences) <https://scolaweb.ict-toulouse.fr/>

These identifiers also allow you to connect to the 'TICE' teaching wifi network and to the school's computers.

You can reset your password by clicking on the following link: You can reset your password by going to the page indicated by the following QR Code:



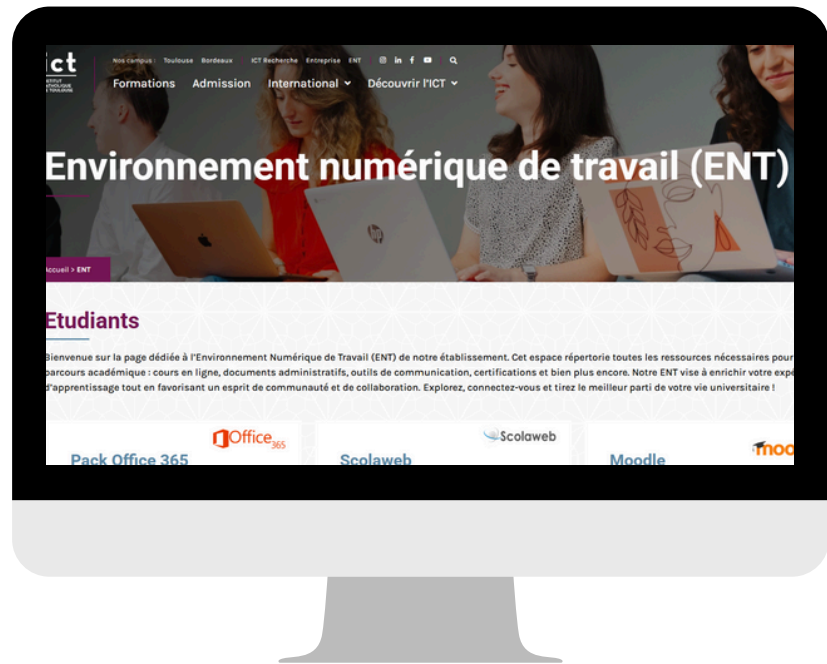
For any requests for information, complaints or difficulties encountered before, during or after your training, you can contact the management team at any time.

If you have any problems accessing the institution's internal IT services, you can send your request to the following email address: tice@ict-toulouse.fr

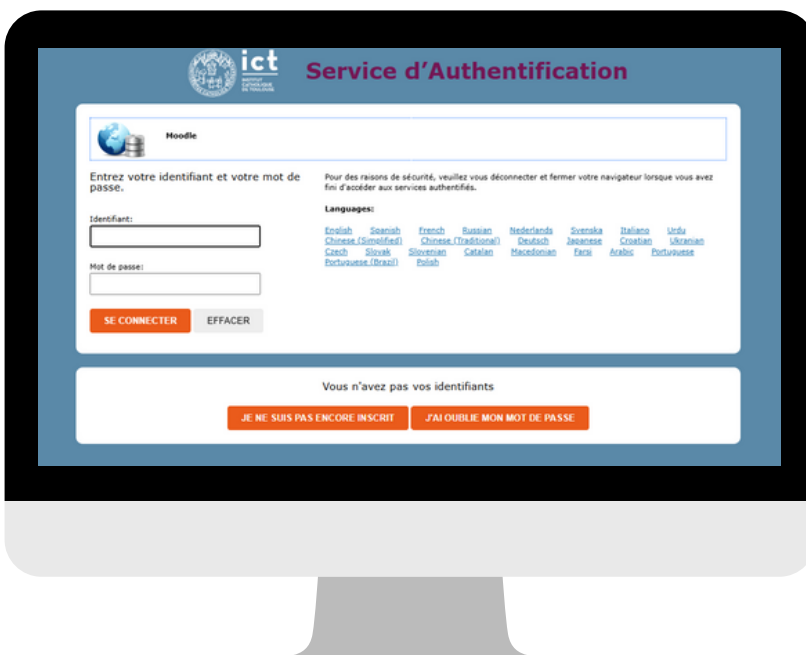
You have access to your French lessons (written, audio and video documents) online, on the ICT Digital Work Environment.

Your access to Moodle :

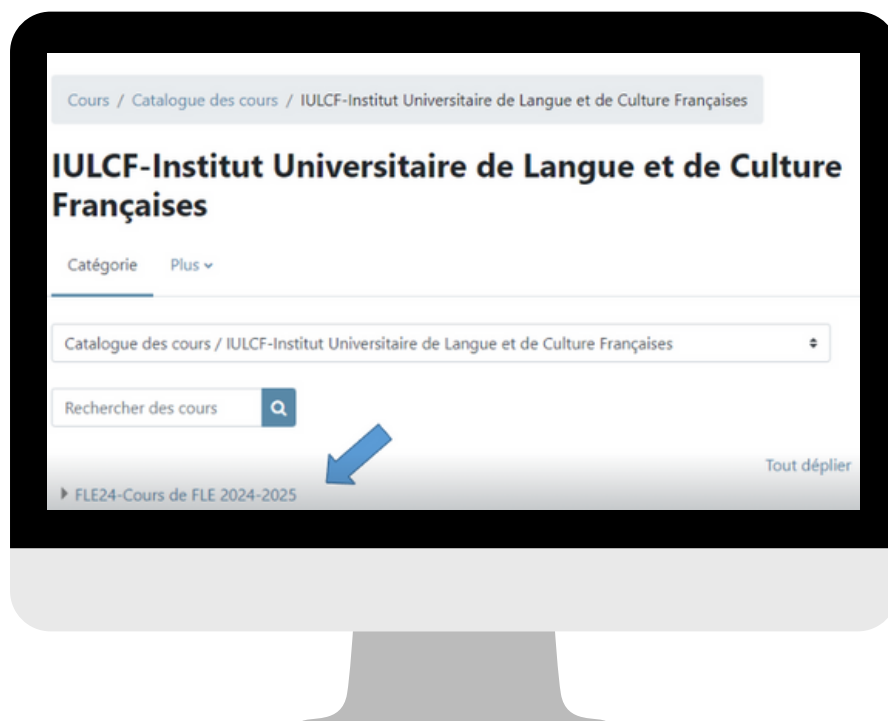
1) Log on to the ICT website, ENT section



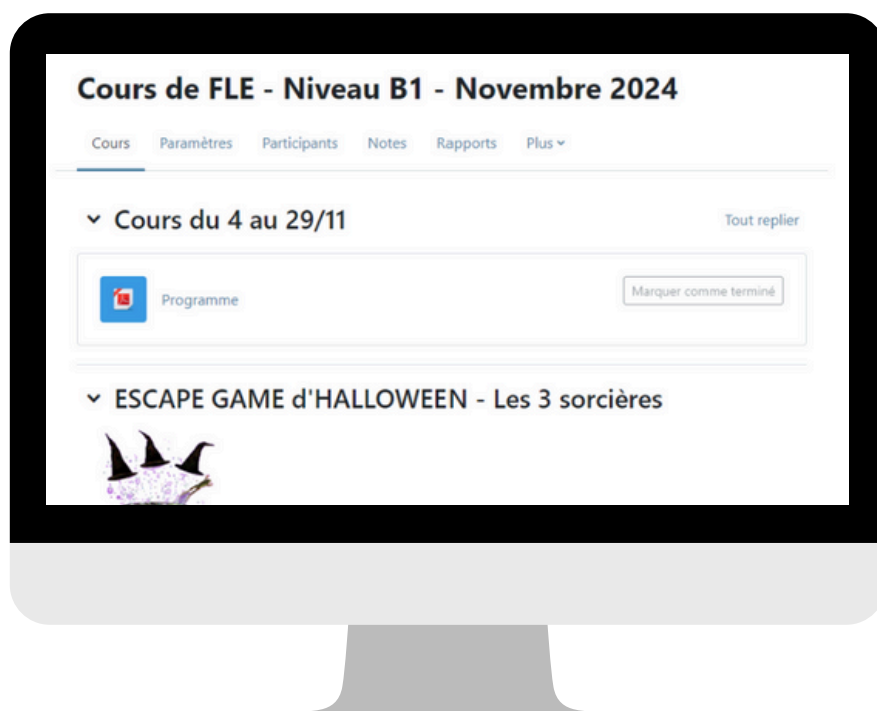
2) Log in to the ENT using the username and password you received by email.



3) Find your level group



4) Discover your class documents



LA CARTE D'APPRENANT

Every student at IULCF has a student card that gives them access to a range of services.

This student card is issued to you directly when you enrol.

YOUR STUDENT CARD ALLOWS YOU TO:

- access the campus
- borrow books from the university library (BU)
- pay for your meals in the cafeteria
- pay at vending machines on university campuses
- benefit discounts upon presentation of your card.

ict
INSTITUT
CATHOLIQUE
DE TOULOUSE

849463549

2024 - 2024

Nom

Prénom

N° d'étudiant

Filière

Signature

N°(s) de

N° INE

Cette carte est strictement personnelle

On your last day of class, we will ask you to complete our satisfaction questionnaire.

You can answer it online by scanning this QR code.



Institut Universitaire de Langue et de Culture Françaises de l'Institut Catholique de Toulouse



CONTACT :

iulcf@ict-toulouse.fr

+33 (0)5 62 26 85 42

SCAN ME



ict
INSTITUT
UNIVERSITAIRE
DE LANGUE ET
DE CULTURE
FRANÇAISES